



Paddle # 14

Lower Wadboo Creek

www.BerkeleyBlueways.com

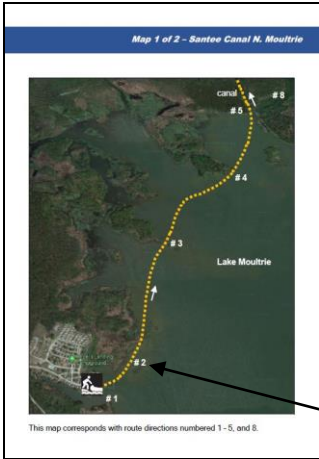
Distance: 3-4 miles

Time: 2-3 hours

Difficulty: Moderate



Convenient Functionality Built into This Guide





On Map Pages:

Using your phone (or touch-screen enabled device), tap any of the route numbers to bring up a map of the exact location!



Route - Santee Canal N. Moultrie

Route Directions	
1	From the boat ramp at Angel's Landing Marina, turn left, heading in a northeast direction. LOOK →  <small>Click on individual route directions to bring up map of exact location!</small>
2	At 0.1 mile, pass by island of tall grass. It's best to pass on the left side, closest to the mainland. Continue in slight northeast direction.
3	Pass by tip of island at 0.6 miles. Begin  even more northeastern direction towards another large island 0.3 mile away.
4	At 0.9 mile, paddle around southern tip of island, head into center of bay, paddling towards upper right corner of bay. This is where the canal opening is located.
5	Enter Santee Canal at 1.4 miles. This is a narrow, shallow waterway (no more than 20 yards wide and maintains a depth of 4-5 feet). Enjoy the calm waters of the Santee Canal. Keep an eye out for wildlife, including alligators, deer, wild boar and a variety of waterfowl!
6	Come to railroad crossing over the canal at 2.8 miles. The canal will begin to narrow shortly after the railroad crossing.
7	At 3.2 miles, come to the obvious end of the canal. Return the same way you came.
8	Option: Turn a hard left when leaving the canal and head into a field of lilies. This is picturesque and worth the extra 20-30 minutes, particularly when everything is in bloom!

On Route Direction Pages:

Tap anywhere in the individual direction boxes to bring up a map of the exact location!

Lower Wadboo Creek



Date Paddled: _____

14



It's easy paddling on the Lower Wadboo Creek.

Summary

On the map, this looks like a wide, winding creek that leads to the Tailrace Canal, but it's so much more than that! The Lower Wadboo Creek includes beautiful flora, inlets and tributaries that include swamp-like habitats and a chance to see birds of prey. Don't underestimate the tidal influence, it can test the strongest paddlers!

Difficulty

Moderate. The biggest consideration is the tidal influence from the Tailrace Canal (Cooper River).

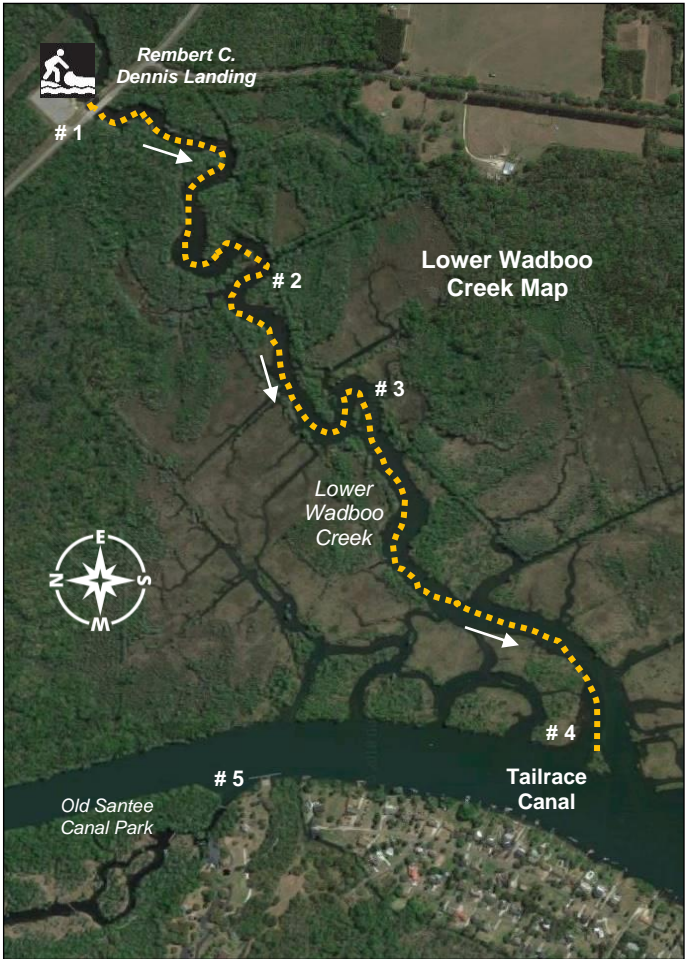
Distance

3 - 4 miles, varies. Best suited as exploration of inlets and Tailrace Canal.

Time

2 - 3 hours

Crowds	Moderate. There are almost always boaters zipping up and down the wide creek.
Boat Type	Kayaks or canoes 12-feet or longer. Paddle boards are not recommended.
Put In / Take Out	<p>Rembert C. Dennis Landing, 1400 SC HWY 402, Moncks Corner, SC 29461.</p> <p>GPS: 33.195955, -79.953198 33°11'45.4"N, 79°57'11.5"W</p> <p><u>Directions:</u> All GPS and mapping applications recognize this address.</p>
Fees/Permits	None
Current	Flows west in the direction of the Tailrace Canal, however the tidal influence is a larger factor.
Tidal Influence	Yes, can be strong at times if paddling against the tide. Approximately 2 hours behind Charleston Harbor tide table.
Precautions:	Motorized boats go up and down the Lower Wadboo all day long. Most boaters will slow down and yield to paddlers, but keep a watchful eye.



This map corresponds with route directions numbered 1 - 5 on page 6.

Route Directions - see map on page 5	
1	From the Rembert C. Dennis Landing boat ramp, turn right, paddling under the HWY 402 bridge. Immediately after the bridge, the flora changes with beautiful water lilies on the right.
2	This paddle is full of small inlets from the creek, to flooded 19 th century rice fields. At 0.5 mile, pass a small island (might look more like a peninsula depending on water level) in an S-curve. Just beyond the island on the left is a small access stream that leads back to a beautiful cypress swamp.
3	At 1.0 mile, there is another small stream to the left that goes back into a marsh and wooded area. This is a fantastic spot to fish for large bluegills and redbreast.
4	Reach the Tailrace Canal at 1.5 miles. In addition to these route directions, there are literally dozens of small inlets, streams and tributaries to see along the Wadboo Creek. Suggestion: take your time returning to the boat ramp and explore these areas. Return the same way you came.
5	<u>Option:</u> For strong paddlers only. There can be a strong current and high-speed boats. At the Tailrace Canal, turn right/north and paddle 0.4 mile to the Old Santee Canal Park that's on the west side of the river. There is a dock that you can rest and get out of your boat. If you decide to explore the park, please visit the Interpretative Center up the hill and pay for admission.



*Paddler and his "best friend" on the Lower Wadboo Creek. **Note:** Wearing a PFD (life jacket) is always recommended. Always make sure your dog does not disturb or attract the attention of wildlife!*



Stunning Red Shouldered Hawk on Lower Wadboo Creek in winter.